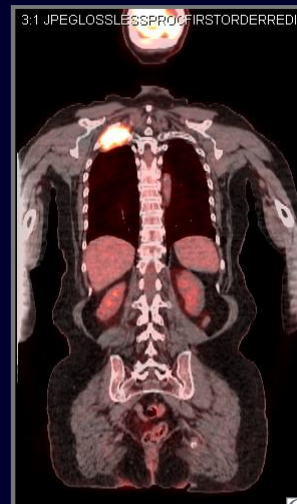
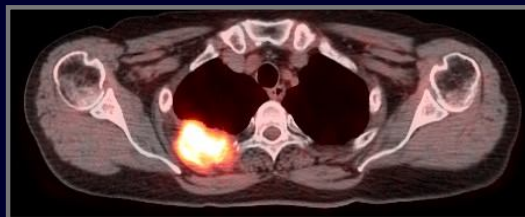
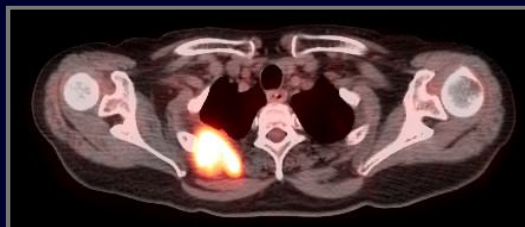

Interview with Dr. David Djang,
Director of Nuclear Medicine, Swedish Medical Center:
PET Scans in Oncology

May, 2009



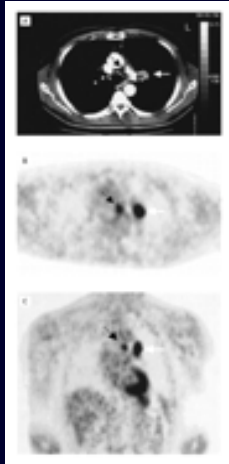
by
Howard (Jack) West, MD
Medical Oncologist
President & CEO
GRACE

Lung Cancer (Pancoast Tumor)
PET/CT Imaging

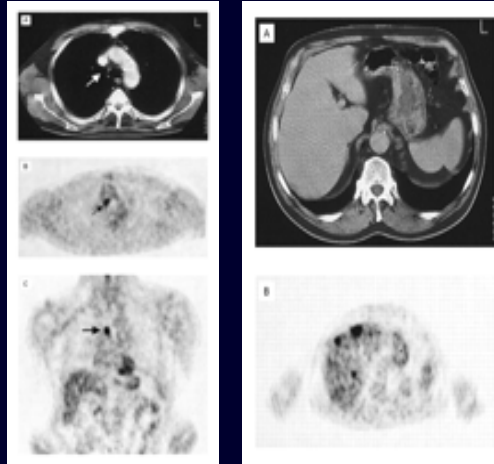


Utility of Metabolic Imaging/ PET Scanning in Work-Up of Lung Cancer

CT and PET agree



PET detects disease missed on CT



From Pieterman et al., NEJM 343: 25-261, 2000

GRACE
GLOBAL RESOURCE IN ADVANCING
CANCER EDUCATION

PET versus CT Staging of Mediastinal Lymph Nodes

Meta-analysis (Dwamena, Radiol 213: 530-536, 1999)

PET: 14 studies, 514 patients

CT: 29 studies, 2,226 patients

	<u>CT</u>	<u>PET</u>
Sensitivity	60%	79%
Specificity	77%	91%
Positive Predictive Value	50%	90%
Negative Predictive Value	85%	93%
Accuracy	75%	92%

GRACE
GLOBAL RESOURCE IN ADVANCING
CANCER EDUCATION