
Interview with Dr. Kristin Manning, Seattle Radiology

Part 2: Challenges in Cancer Imaging



by Howard (Jack) West, MD

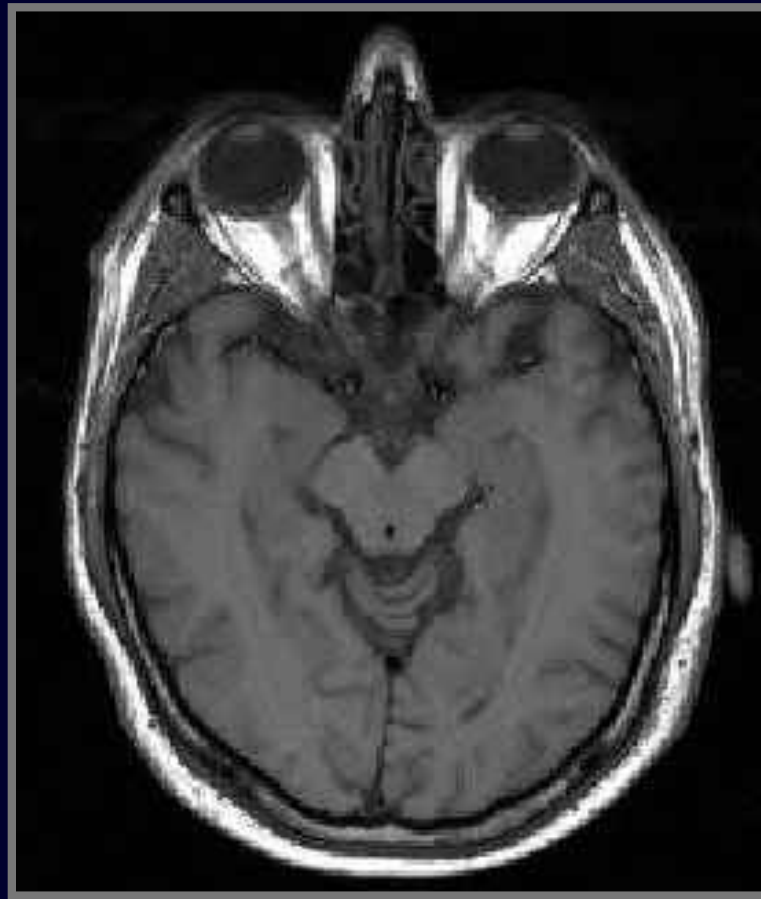
President & CEO
GRACE

Routine Head Imaging

Head CT



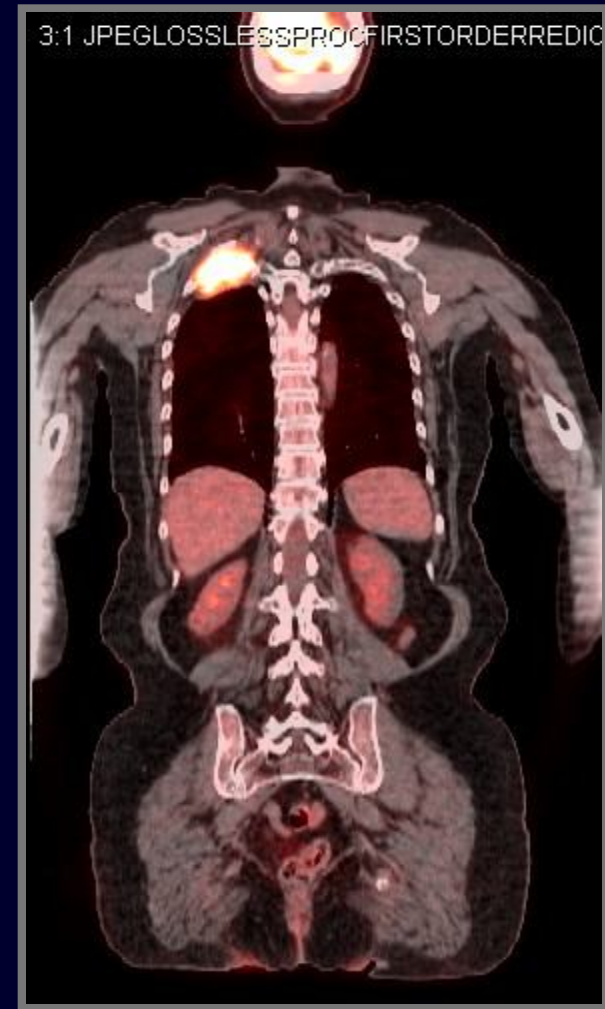
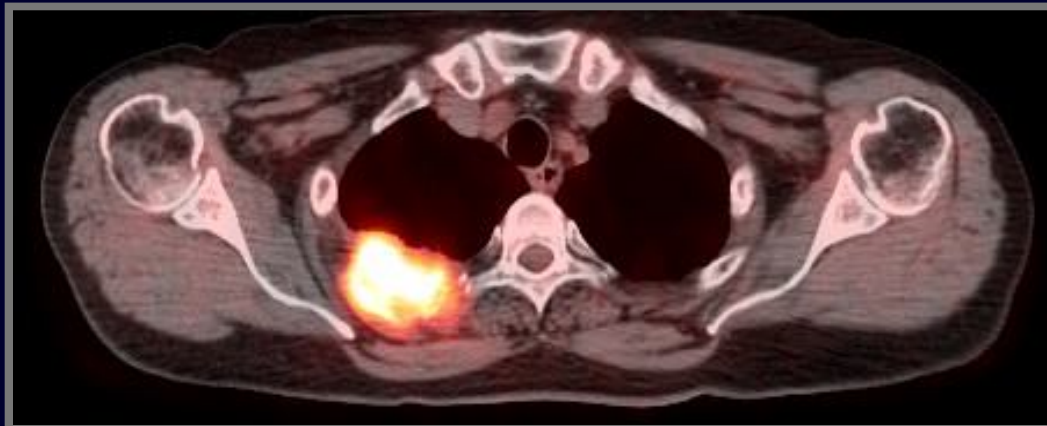
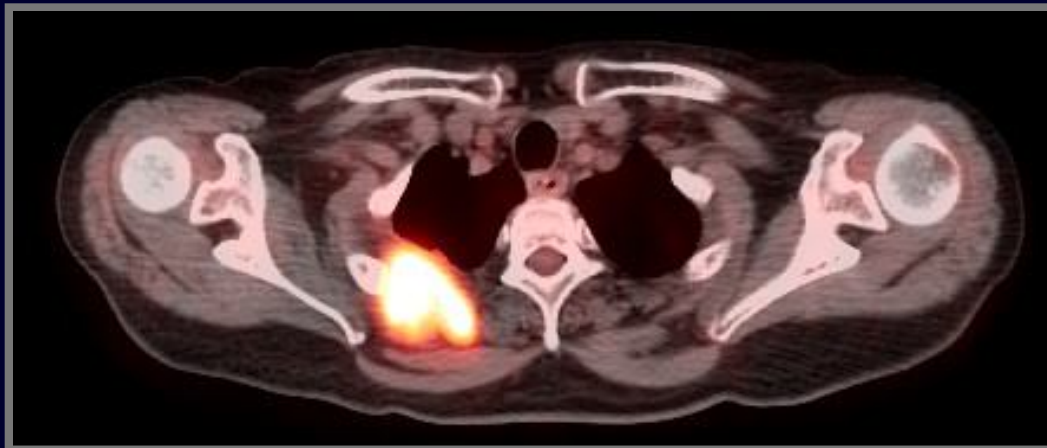
Head MRI



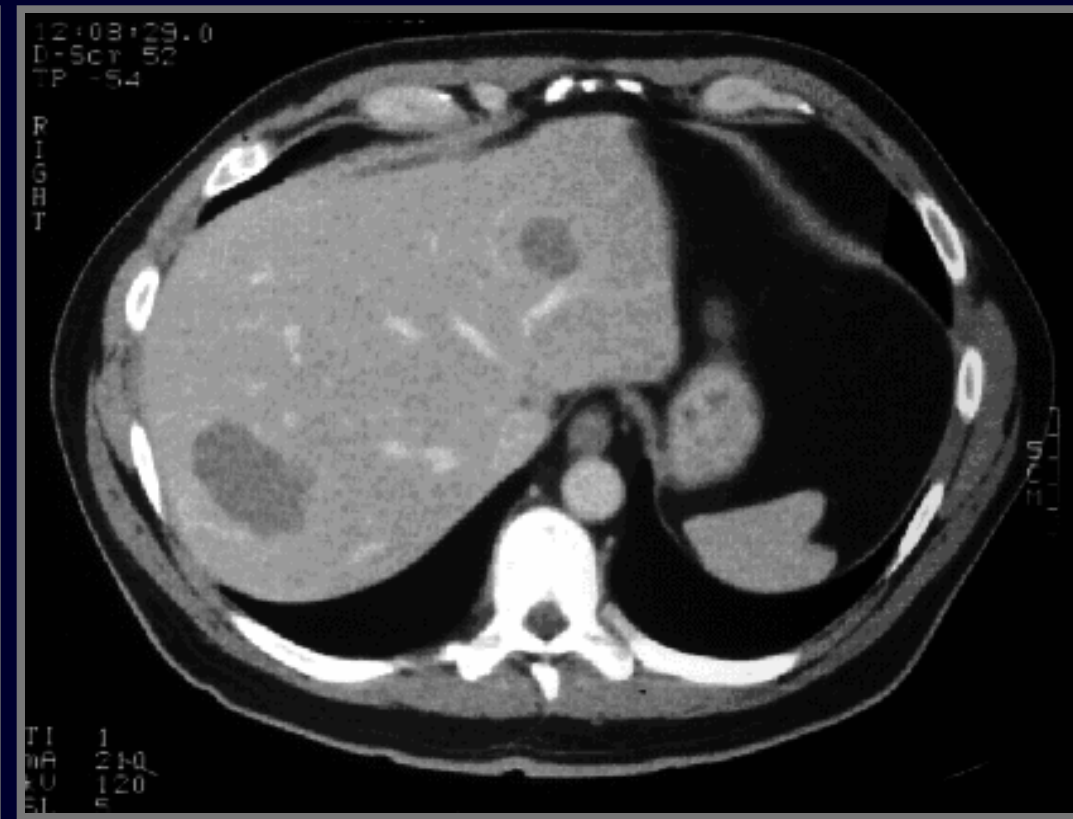
MRI of Spine



Lung Cancer (Pancoast Tumor) PET/CT Imaging

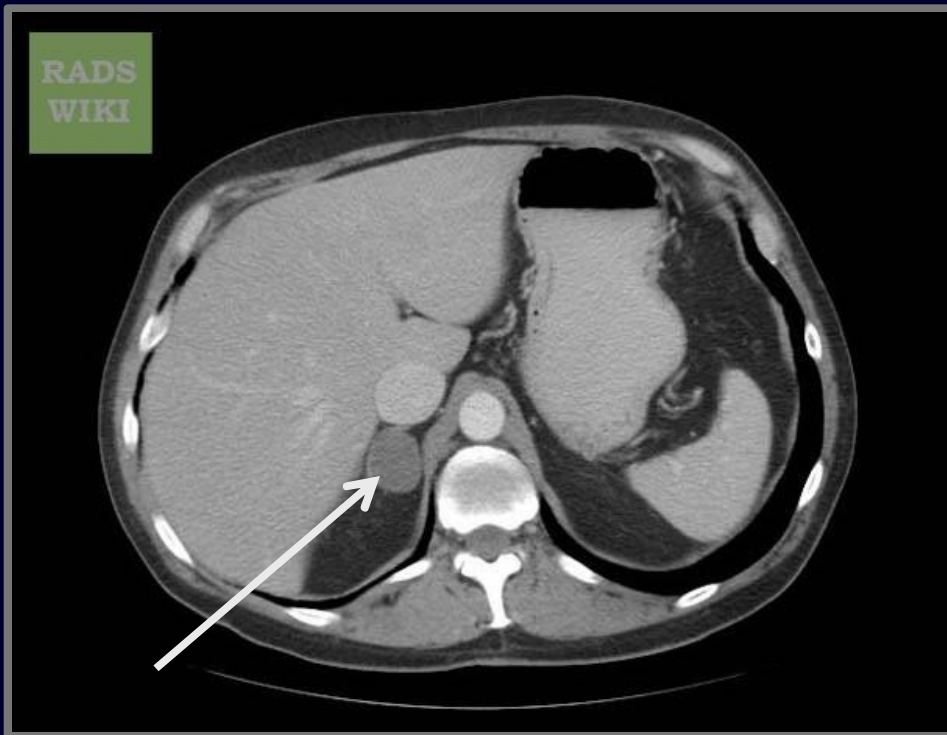


Liver Hemangiomas on CT

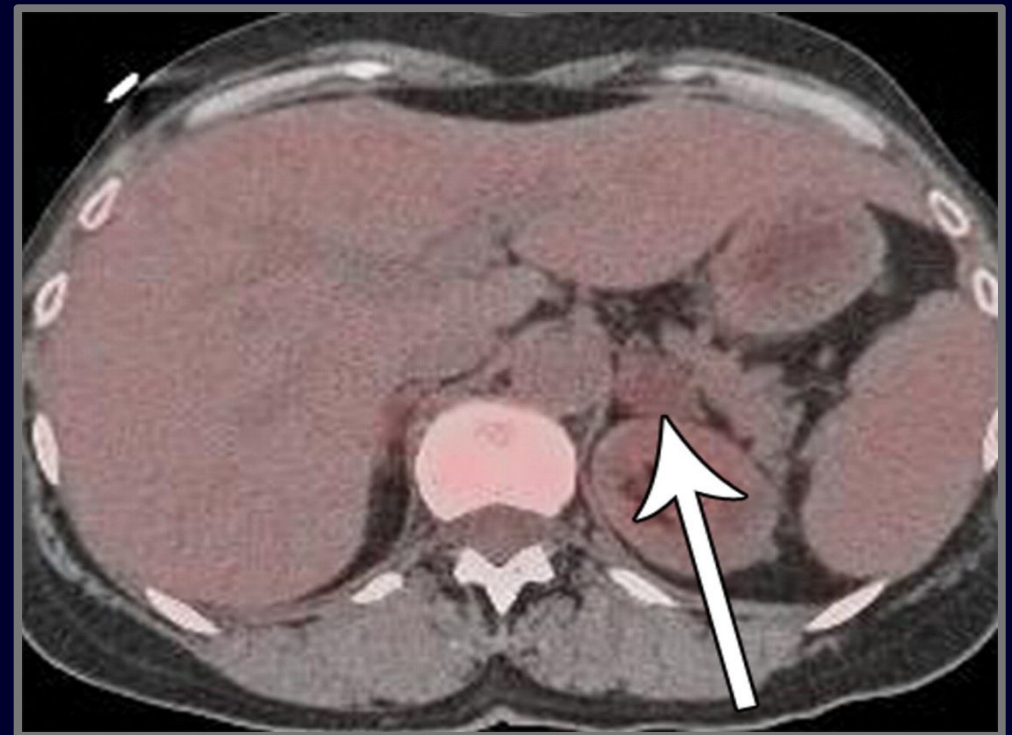


Adrenal Adenomas (Benign) on CT, and PET/CT

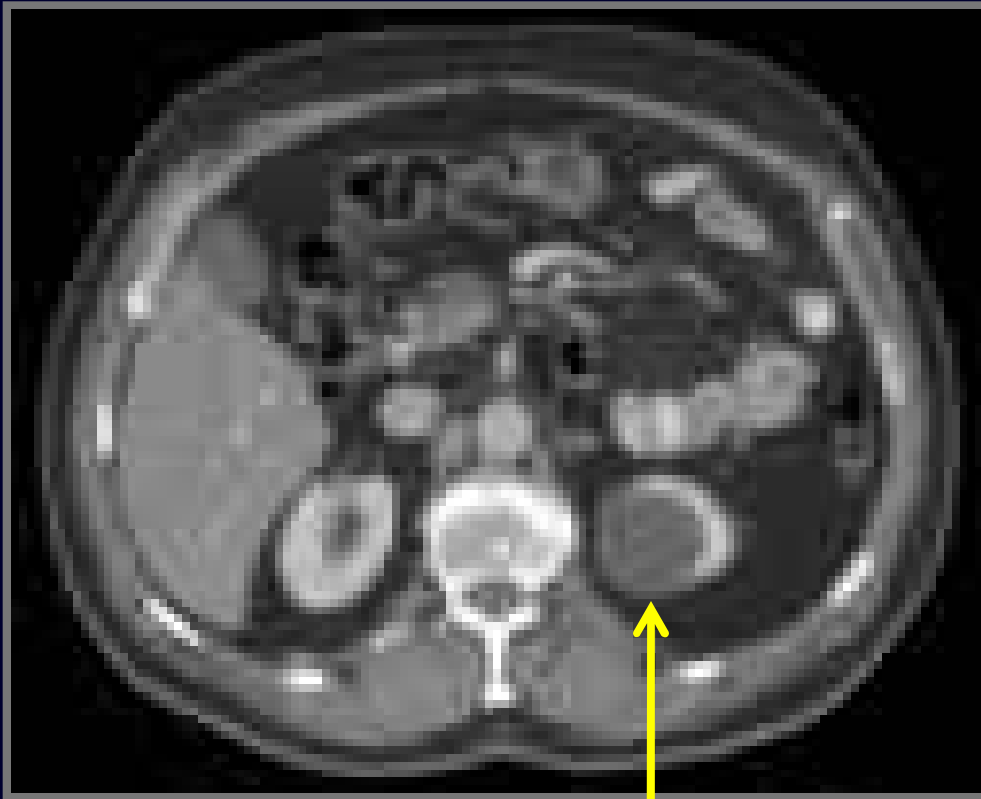
CT



PET/CT



Renal Cysts on CT



Radiation Risk from Scans?

