

## Interview with Dr. Toni Wozniak, Medical Oncologist, Karmanos Cancer Center at Wayne State University, on Management of Small Cell Lung Cancer (SCLC)

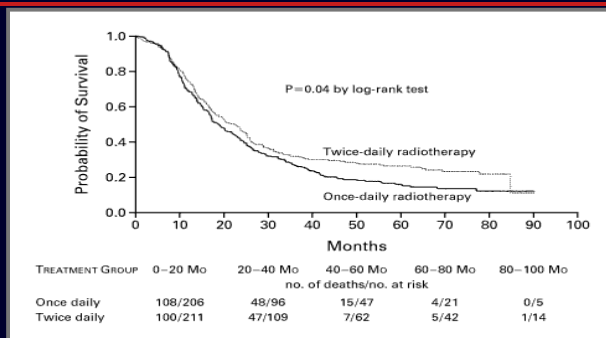
March, 2009



by  
Howard (Jack) West, MD  
Medical Oncologist  
President & CEO  
GRACE

## Once vs. Twice Daily Radiation with Chemotherapy for Limited-Stage SCLC: Efficacy

Turrisi,  
N Engl J Med

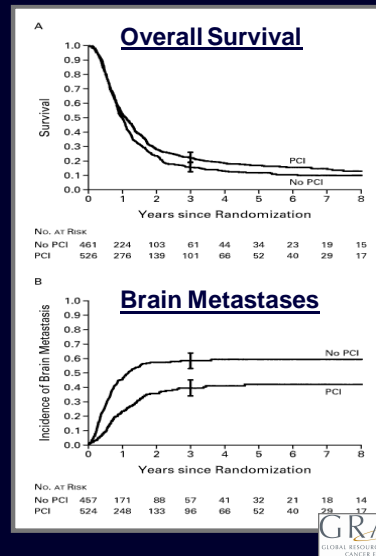


<u>Arm</u>	<u>Median Survival (mo)</u>	<u>4-Year Survival (%)</u>	<u>Local Recurrence (%)</u>	<u>Distant Recurrence (%)</u>	<u>Grade 3 Esophagitis (%)</u>
Daily RT	19	16	52	55	11
Twice Daily RT	23	26	36	40	27

# Role of Prophylactic Cranial Irradiation (PCI) in Limited-Disease SCLC

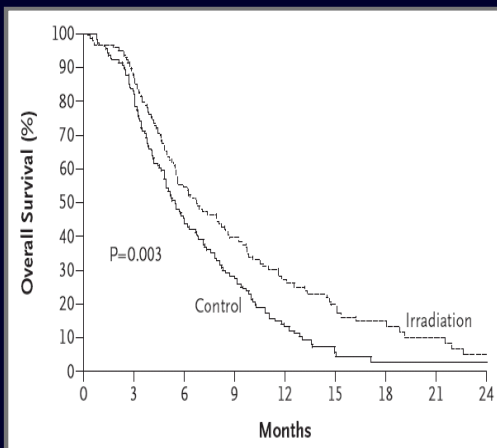
Meta-analysis by Auperin, NEJM 2000  
10 trials, 929 patients

- PCI effect on overall survival is modest, absolute improvement 5%, from 15 to 20%
- PCI significantly reduces the incidence and morbidity of brain metastases
- Generally for patients who have had a very good response to initial chemo/radiation combination therapy

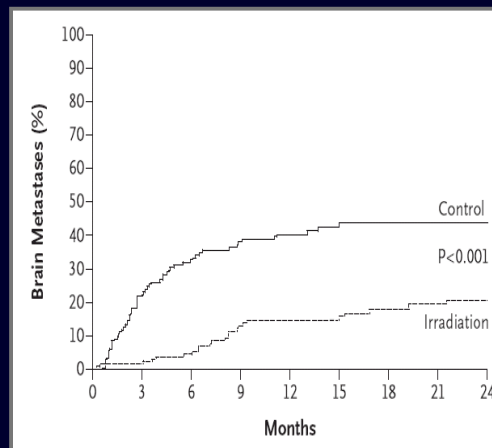


# PCI vs. Observation after Response to Chemotherapy for Extensive Stage SCLC

Overall Survival



Symptomatic Brain Metastases



Slotman, NEJM 2008