

Case-Based Round Table with the Experts, Part 1



Anne Tsao, MD

Assistant Professor, Med Onc
Div. of Thoracic, Head/Neck Onc
MD Anderson Cancer Center
Houston, TX



Alex Farivar, MD
Thoracic Surgeon
Swedish Cancer Institute
Seattle, WA



with
H. Jack West, MD
President & CEO
GRACE

Medical Oncologist
Swedish Cancer Institute

Case Presentation, Background (1)

- 75 year old Chinese man with
 - Coronary artery disease
 - Atrial fibrillation
 - Remote tobacco history
(1 pack/day x 15 yrs, quit 1962)
- Ground glass opacity (GGO) detected in 2002 → enlarging

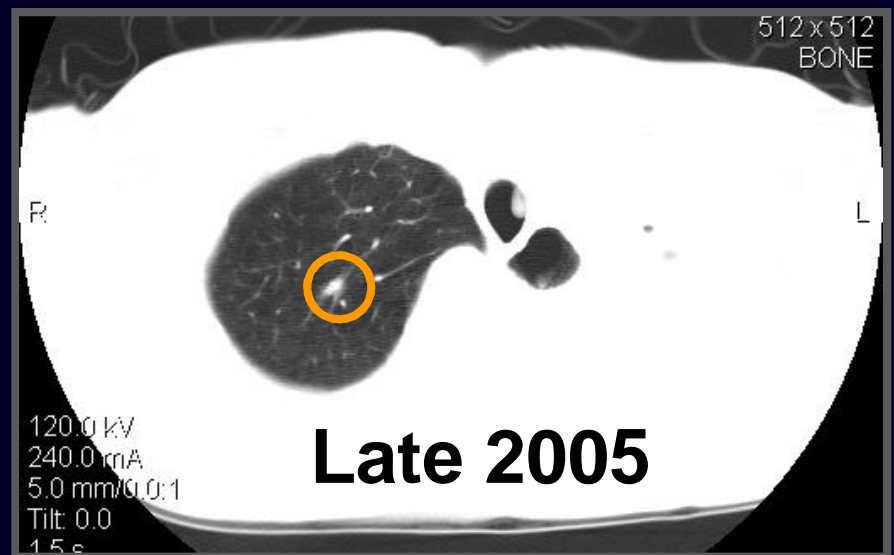
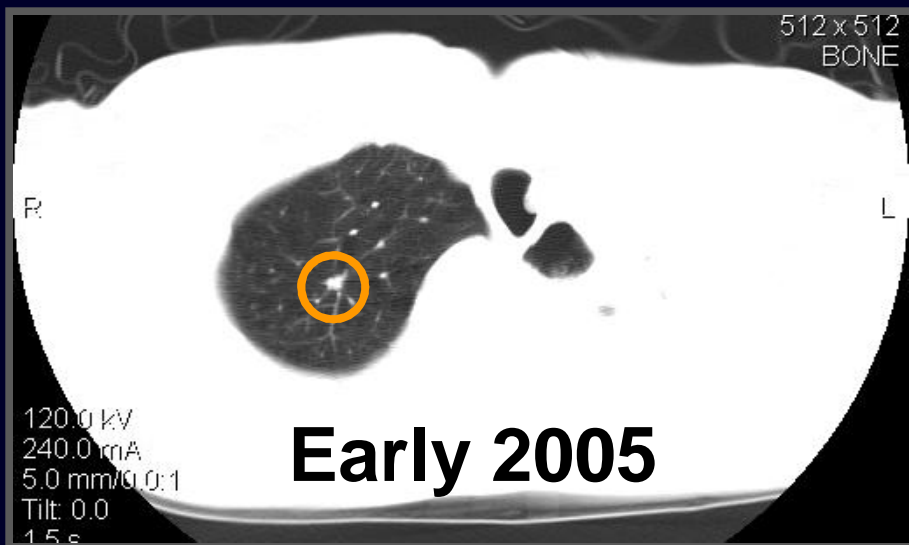
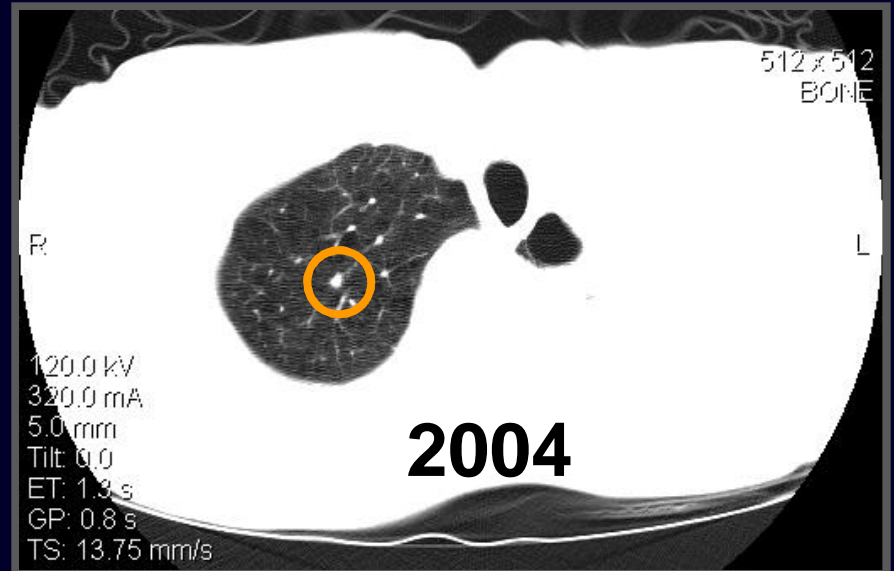
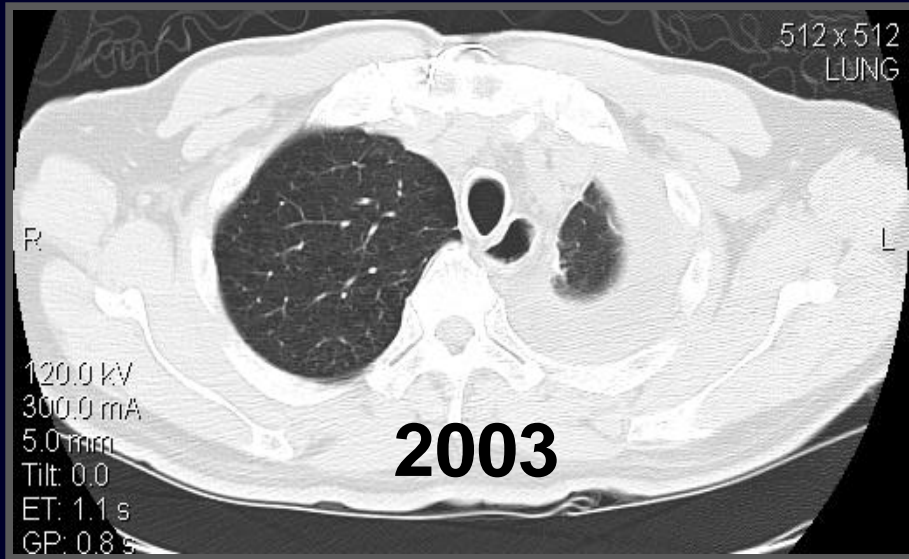
Case Presentation, Background (2)

- Underwent left upper lobectomy Nov 2002
- Pathology:
 - Well-differentiated BAC in 2 foci
 - 1 cm and 0.8 cm, 2.5 cm apart
 - nodes negative
(T4N0 vs. T1(m)N0...)

Case, Ongoing Follow-Up

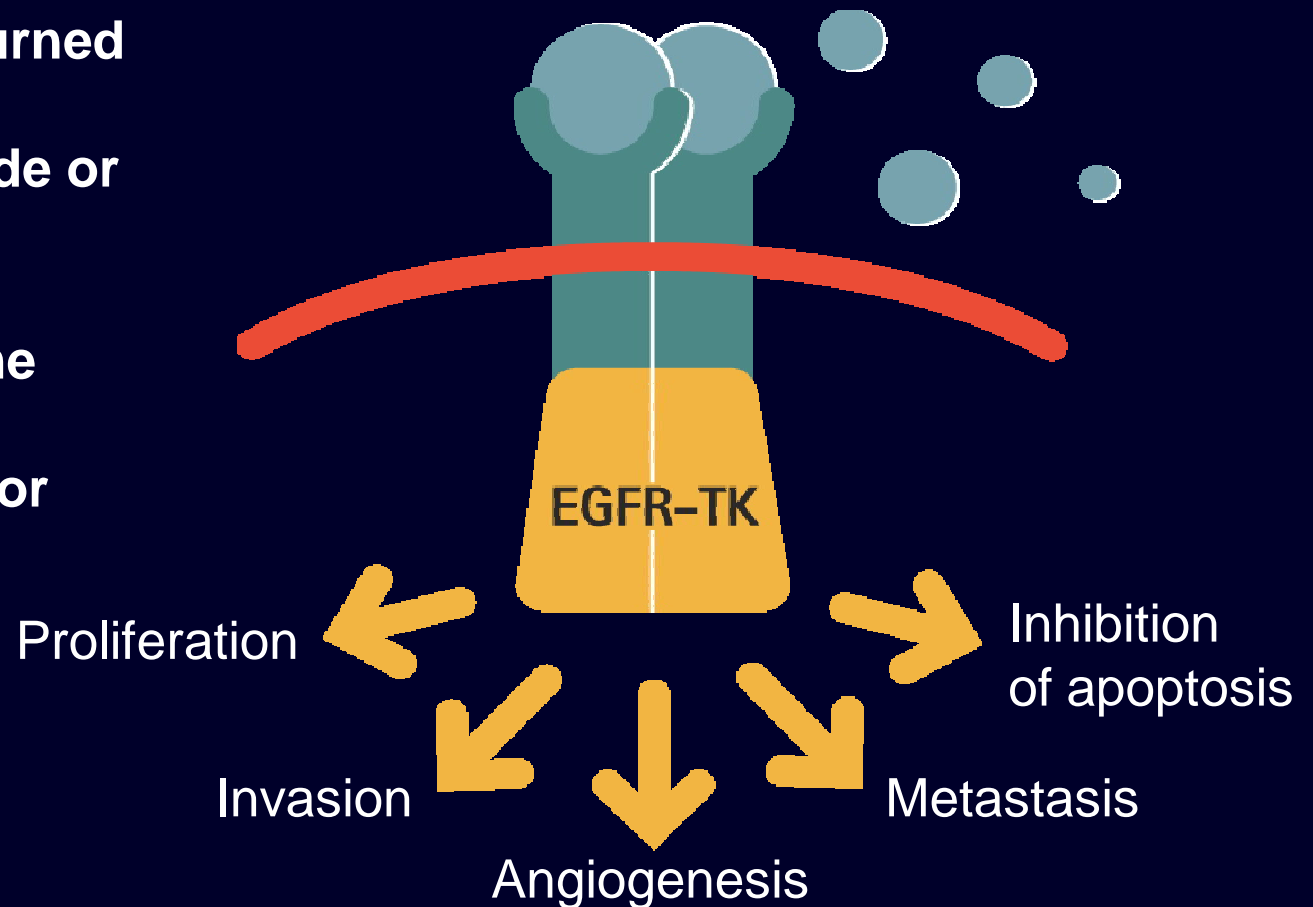
- Transferred his follow-up here
- CT scans over 2-3 yrs intermittently raise questions of vague GGO lesions, come & go
- One spiculated right upper lobe lesion enlarging over time (from 5.5 to 7.5 mm)
- Patient remains asymptomatic
- Pulmonary function tests impaired (FEV1 1.31 L) but candidate for additional lung surgery

Follow-Up Scans

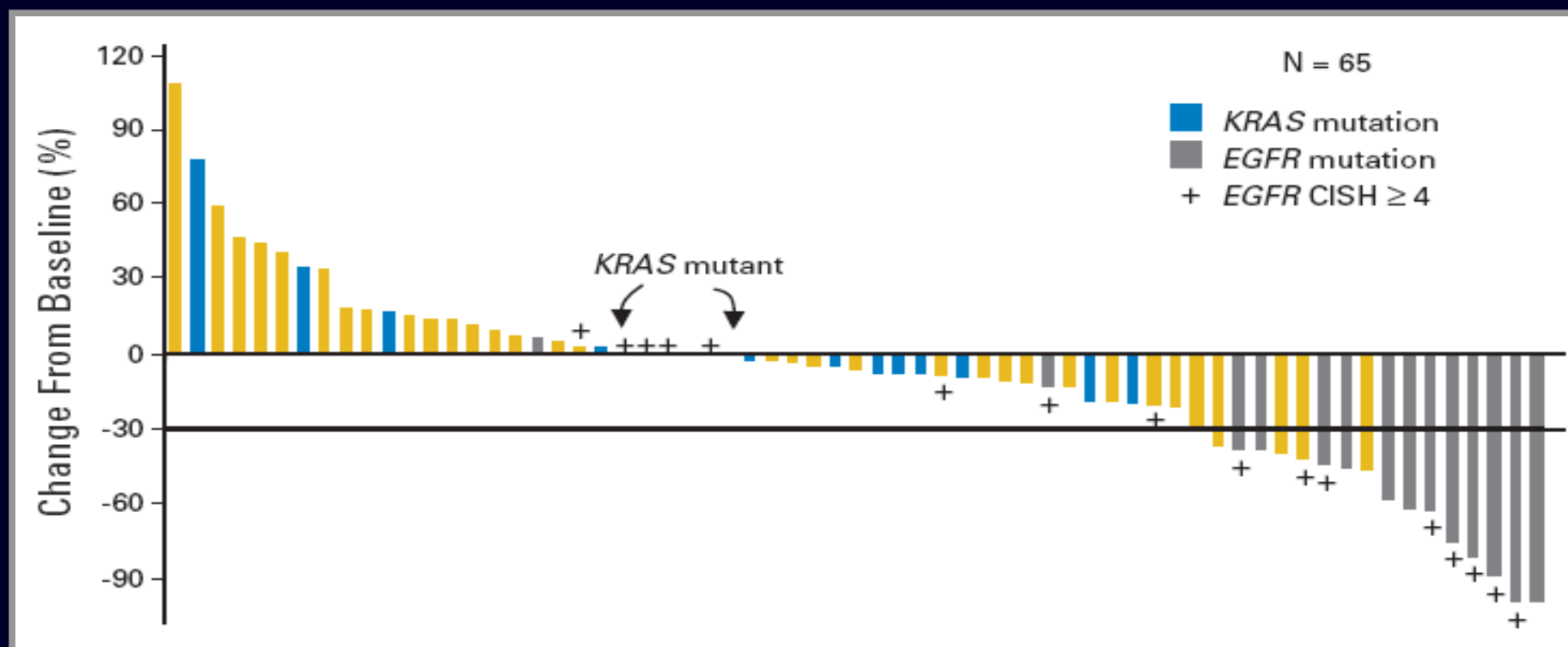


EGFR: Facilitation of Tumor Growth & Spread

- In tumor cells, the EGFR-TK signal is inappropriately turned on by various mechanisms inside or outside the cell
- EGFR-TK enzyme activity drives uncontrolled tumor growth



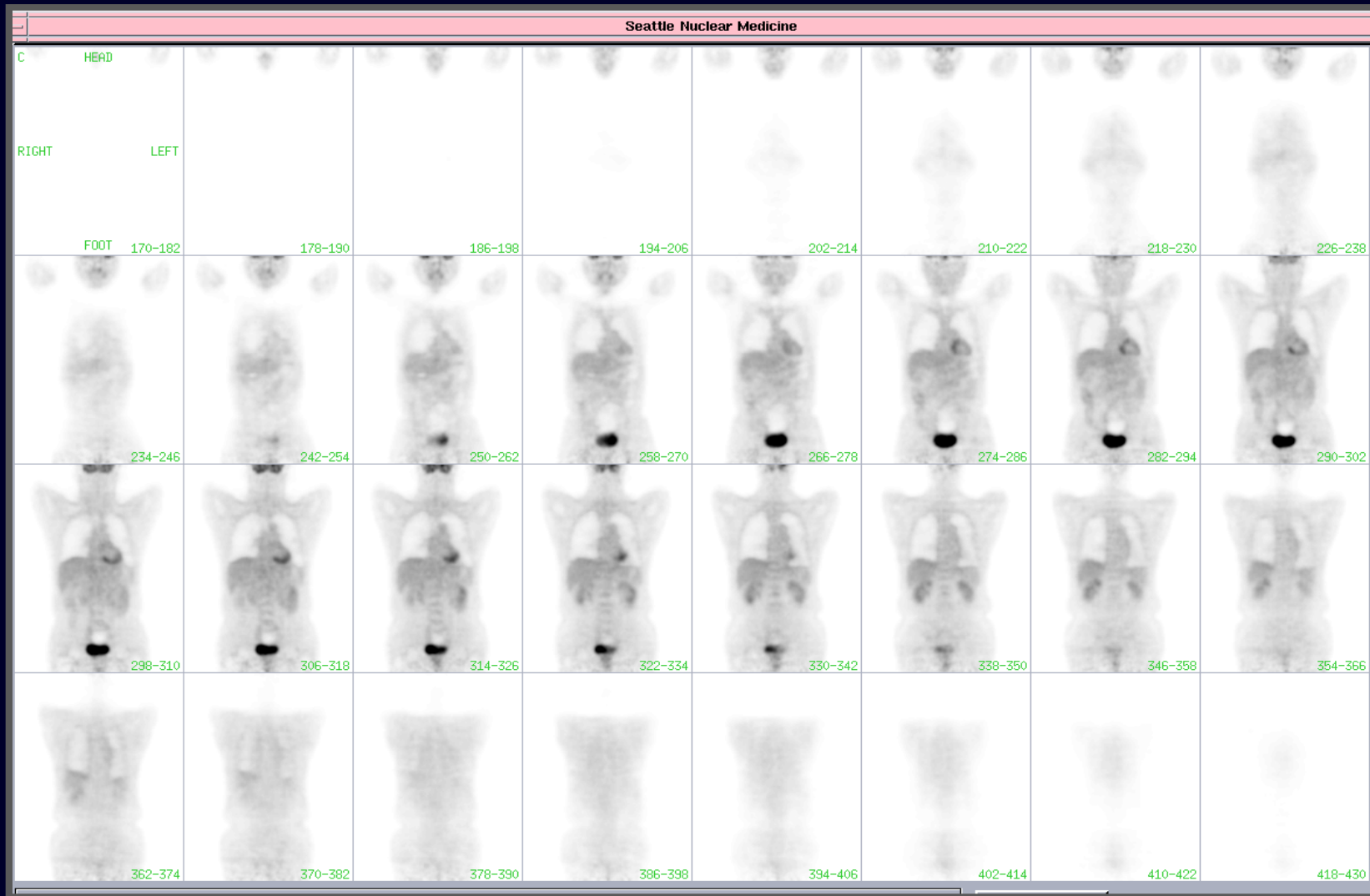
Waterfall Plot of Response on Erlotinib in Advanced BAC, with Molecular Correlates



- Most **but not all** of the best responders carry EGFR mutations
- Many with minor response and even some with PR have neither EGFR mutation nor EGFR gene amplification

Miller, J Clin Oncol 2008

PET Imaging (Unimpressive)

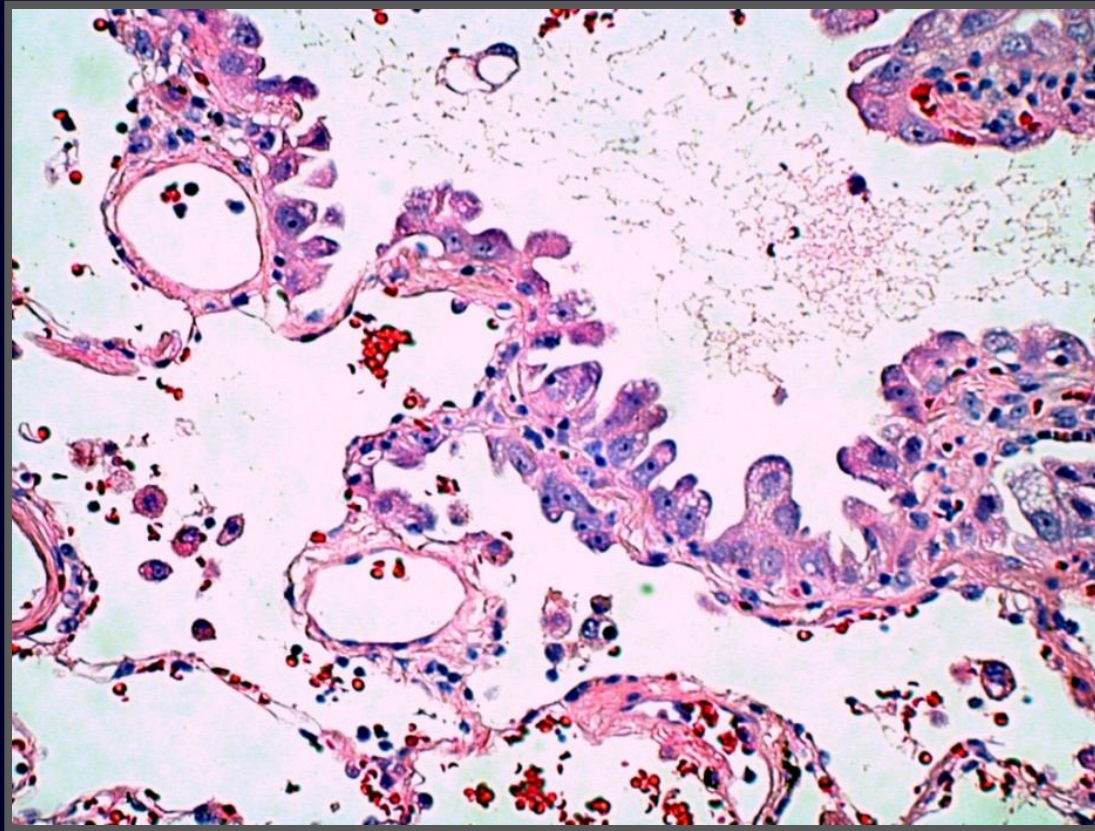


Repeat Surgery and Follow-up

- Underwent VATS wedge resection
- Post-operative ICU stay for atrial fibrillation
- Otherwise did fine

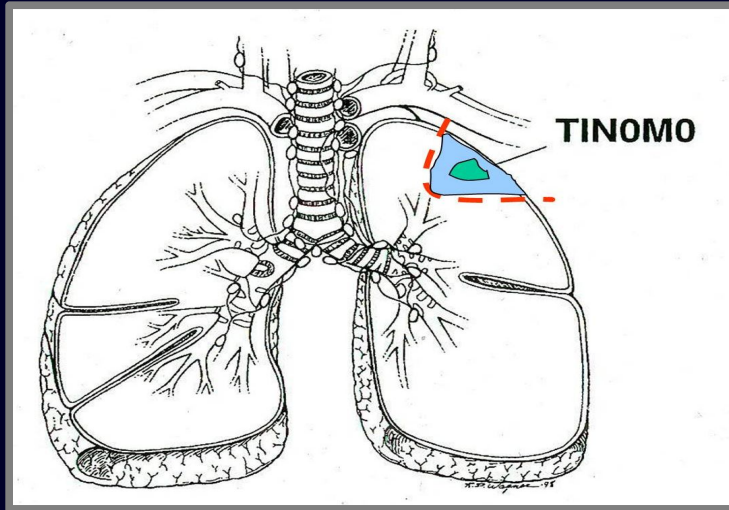
Pathology on Repeat Surgery

- Path: 8 mm well-differentiated BAC with nidus of scar/fibrosis (pT1NxMx)

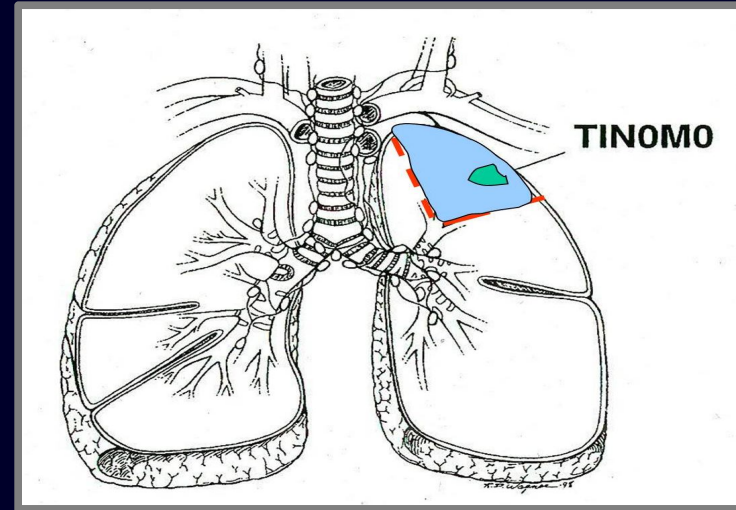


Various Lung Surgeries

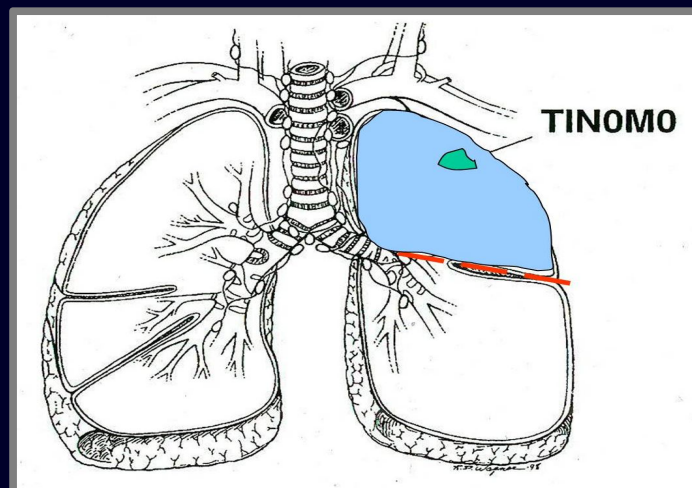
Wedge Resection



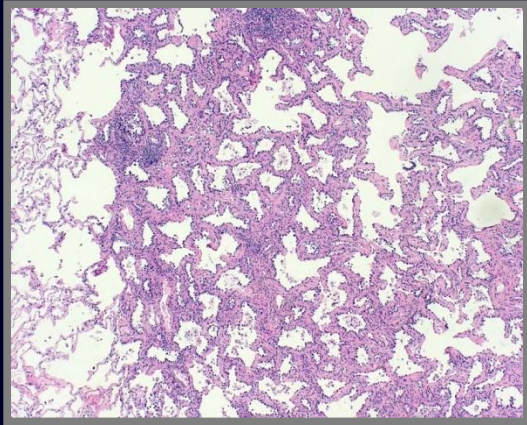
Segmentectomy



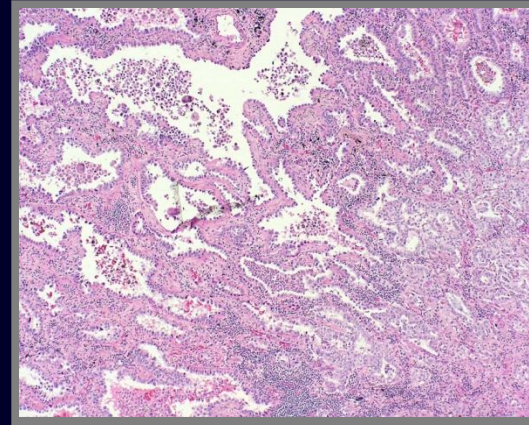
Lobectomy



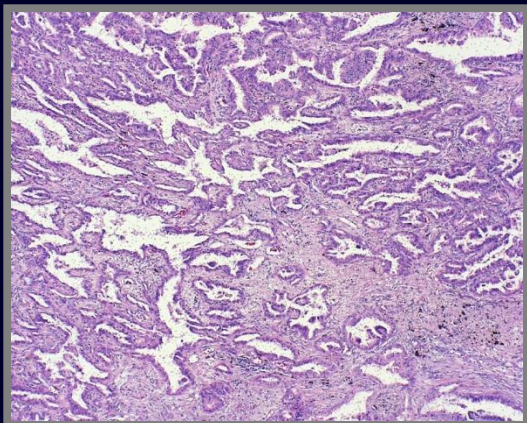
Spectrum from BAC to Invasive Adenocarcinoma



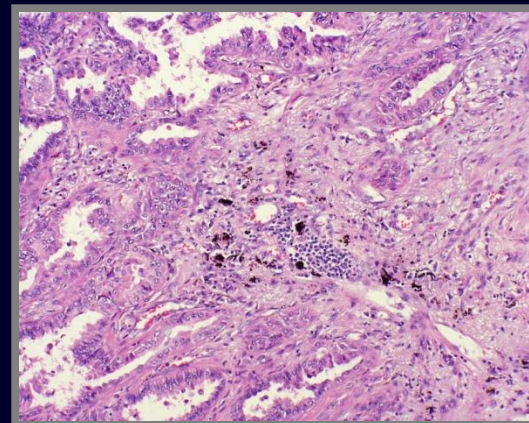
Pure BAC



BAC with Invasion



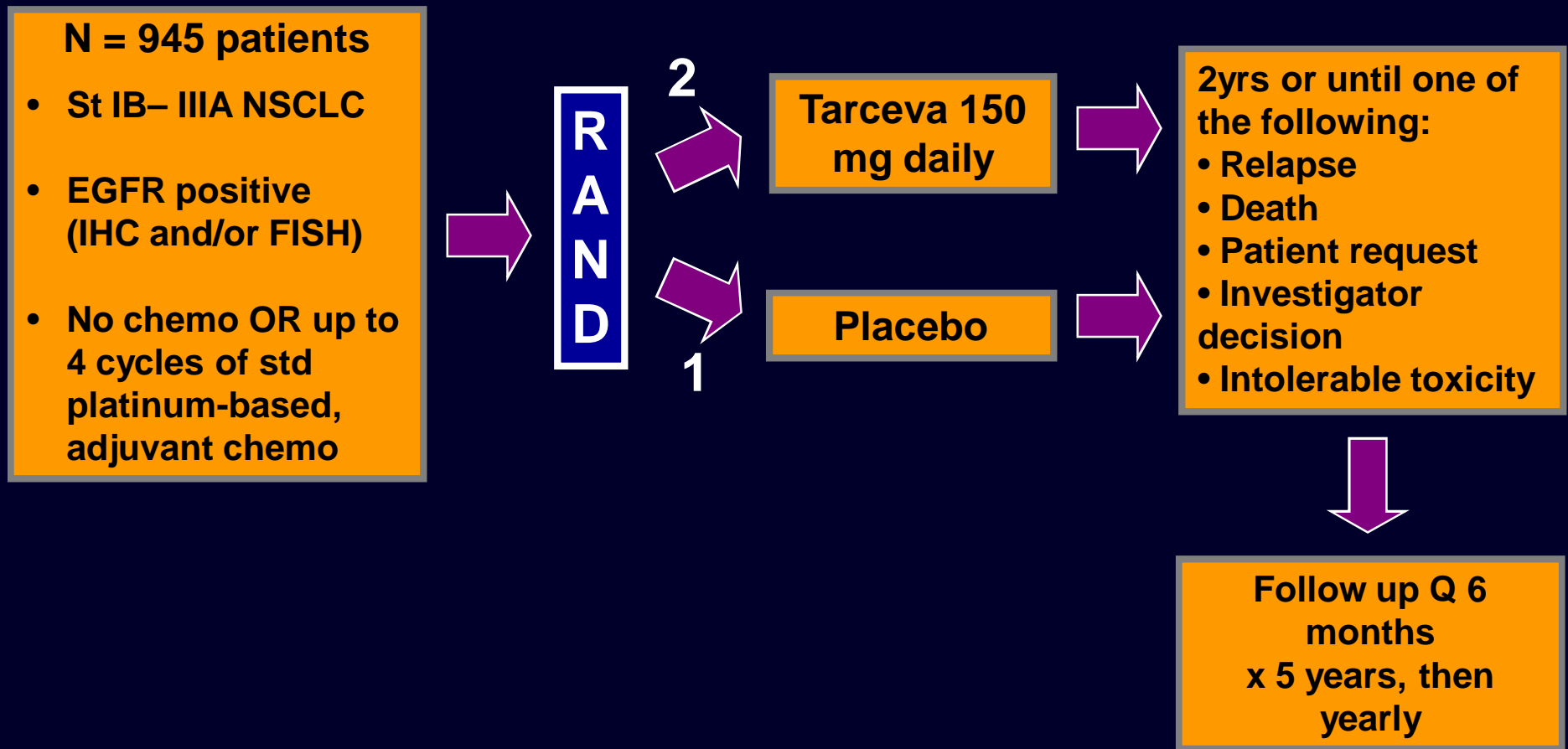
Adeno with BAC



Adenocarcinoma

Randomized Double-Blind Trial In Adjuvant NSCLC with Erlotinib (RADIANT)

Primary Investigator – Dr. Karen Kelly



We depend on your support to
continue GRACE educational
programs like these.

PLEASE contribute
at www.cancergrace.org/donate/

